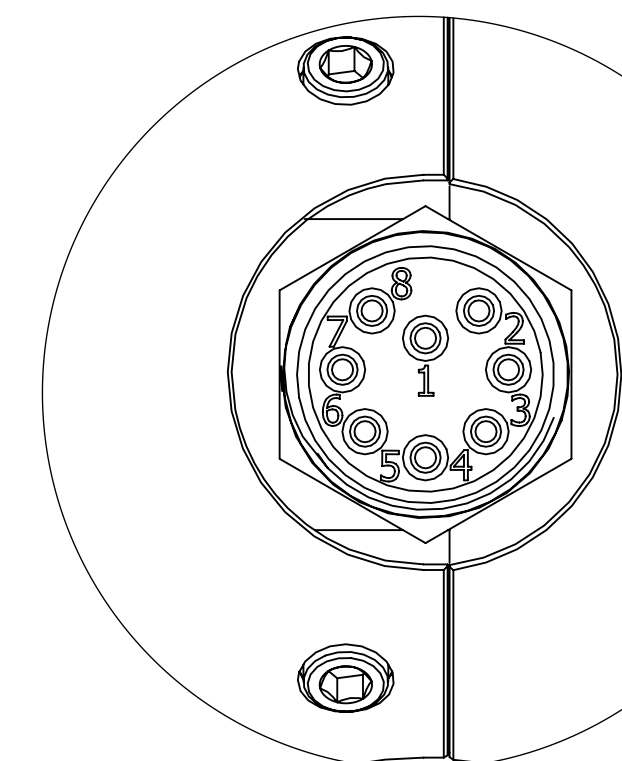
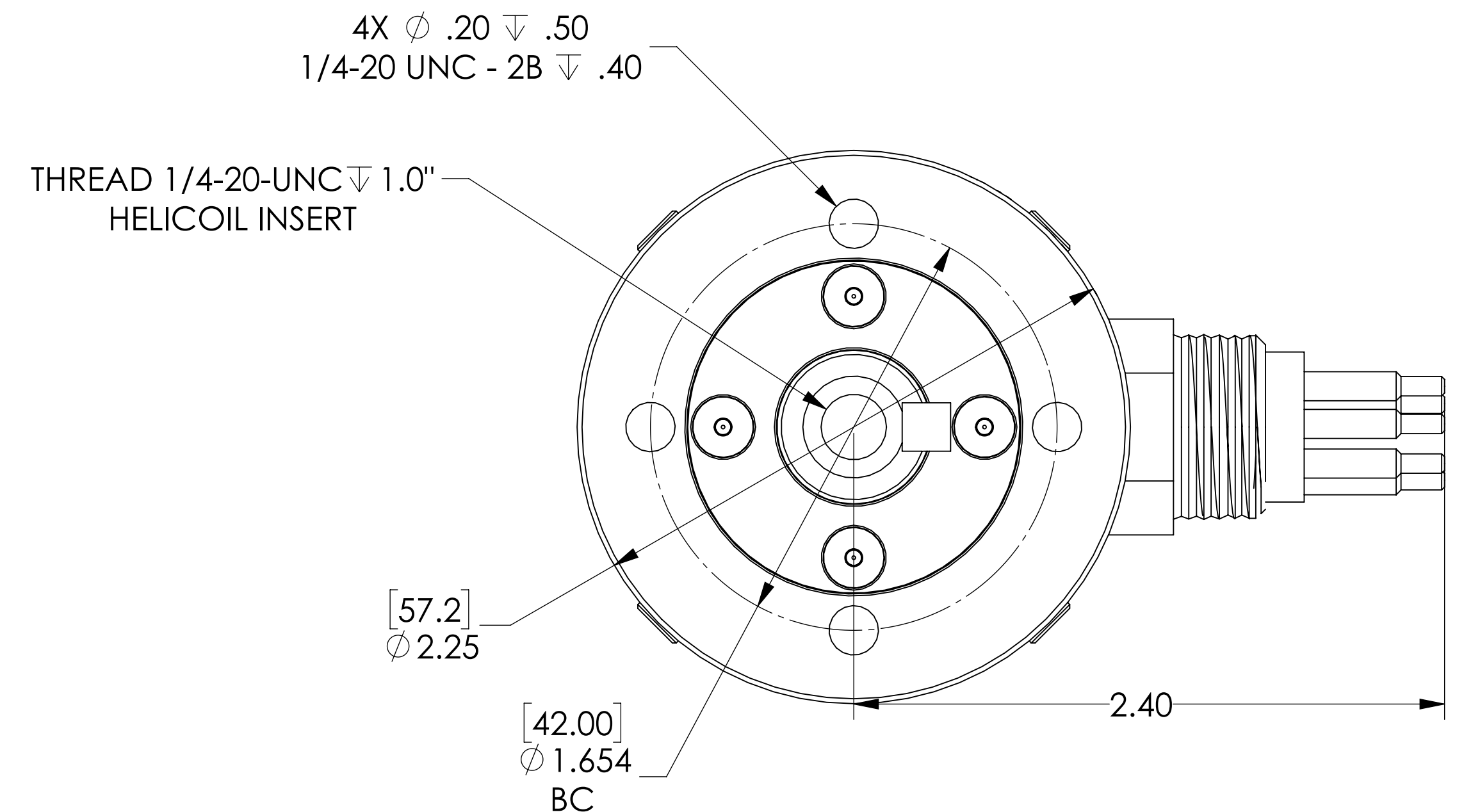
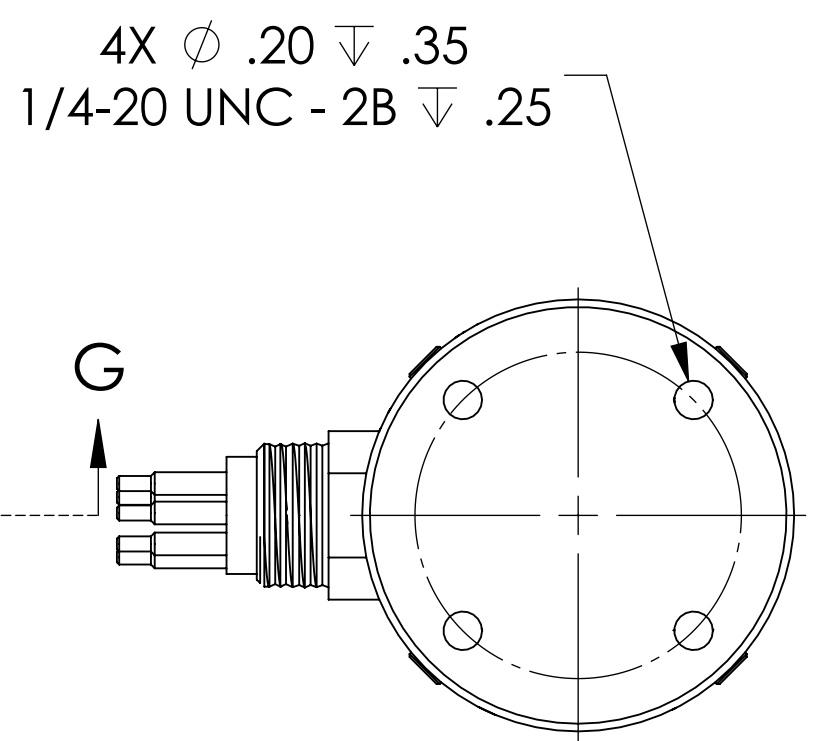
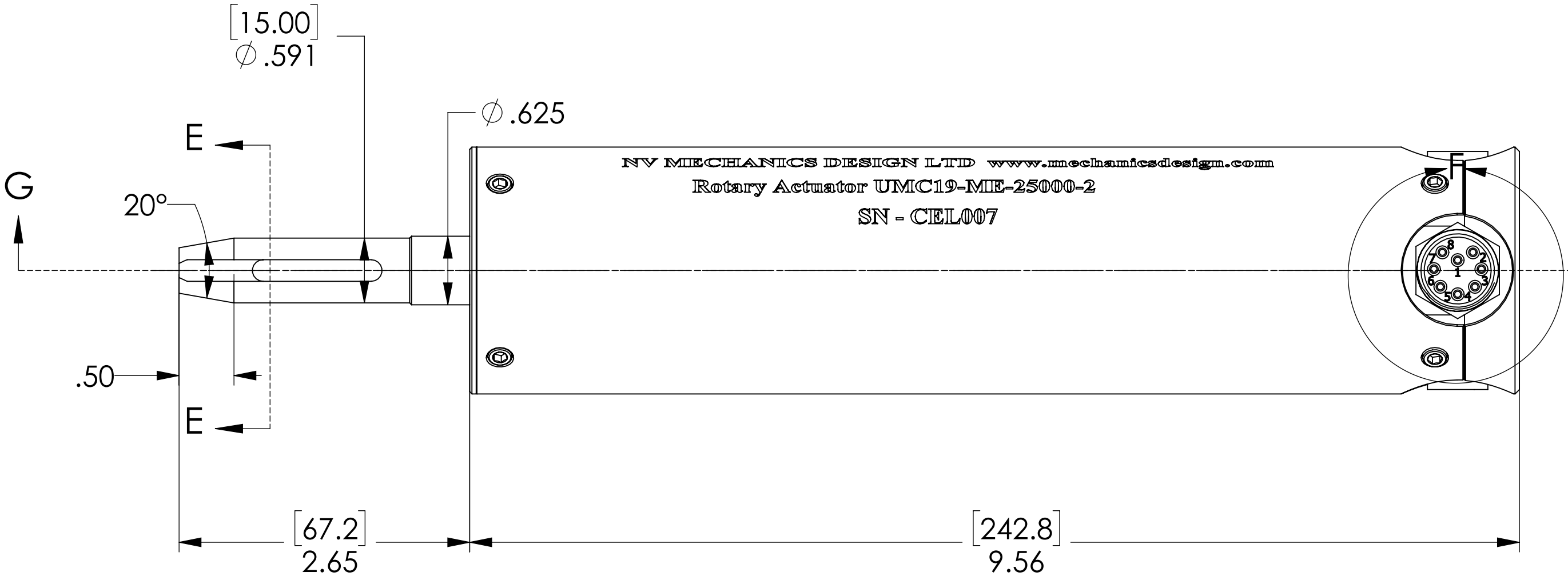
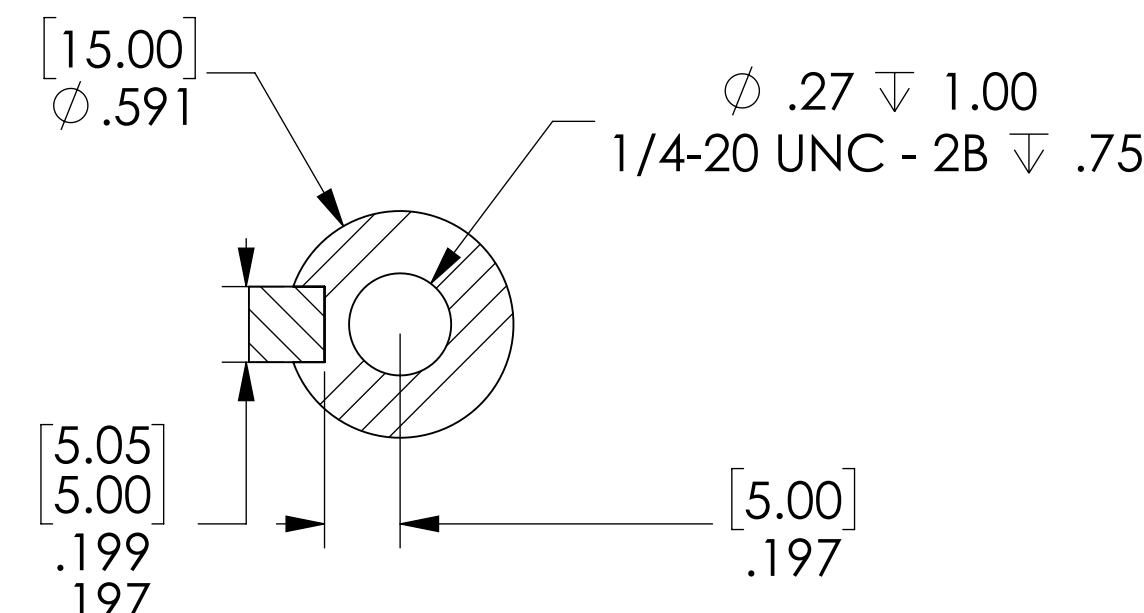



ROTARY ACTUATOR	
MOTOR TYPE	BRUSHLESS MOTOR
NOMINAL VOLTAGE	24VDC
MAX CONTINUOUS TORQUE	[27 Nm]
INTERMITTENTLY PERMISSIBLE TORQUE	[30 Nm]
NOMINAL CURRENT	2.2 A
MAX CONTINUOUS CURRENT	3.5 A
NOMINAL OUTPUT SHAFT SPEED	15 RPM (max 90 degrees/sec)
DIAMETER	2.25" OD (58 mm)
LENGTH	9.5" LONG (243 mm)
CONNECTOR	MCBH8M INSTALLED WHIP 12" MC1&8F PROVIDED
RATED TO 3,000 msw when OIL FILLED	OIL TELLUS S22 (PRESSURE COMPENSATED)
RATED TO 100 msw NON OIL FILLED	3000 msw
DRIVER INCLUDED IN THE HOUSING	RS485/RS422 CONTROL
ABSOLUTE ENCODER ON OUTPUT SHAFT	14 BITS (16,383 counts per turn), NO CALIBRATION REQUIRED
SOFTWARE	PROVIDED

Actuator Connector Pin Number	RS422/RS485 (FROM ACTUATOR)
1	(+) 24VDC
2	(-) 24VDC
3	TX+
4	TX-
5	RX+
6	RX-
7	Shield / NC
8	Shield / NC



DETAIL F
SCALE 2 : 1



TOLERANCES unless otherwise noted				APPROVAL	
ANGLES ±0.3°	DECIMALS .XX ±.1	DECIMALS .XXX ±.050	DECIMALS .XXXX ±.005	DR / DATE IAU FEB 28 2020	 NV Mechanics Design Ltd. 237 E Balmoral Rd. North Vancouver, BC, V7N 1R4 e-mail: sales@mechanicsdesign.com Phone: 604-250-3375 Fax: 604-525-5570
Unless otherwise noted, all dimensions are in inches. DO NOT SCALE. Work to dimensions shown.				CHK / DATE	
FINISH				APPRO / DATE PPR MAR 1, 2020	SUBSEA ROTARY ACTUATOR 24 VDC, 27 Nm, ABS ENCODER UMC19
INTERPRET PER ANSI Y14.3 AND ANSI Y14.5M		DWG FILE NAME UMC19-ME-30000-0.SLDDRW		SIZE D	
This document contains confidential information. All rights are owned by NV Mechanics Design Ltd. No use or disclosure is to be made without the written permission of NV Mechanics Design Ltd.				WBS DWG. NO. UMC19-ME-30000-0	
ZONE	REV.	DESCRIPTION	DATE	APPROVED	SCALE WEIGHT 2.31 LBS SHEET 1 OF 2

REVISIONS				
ZONE	REV.	DESCRIPTION	DATE	APPROVED