

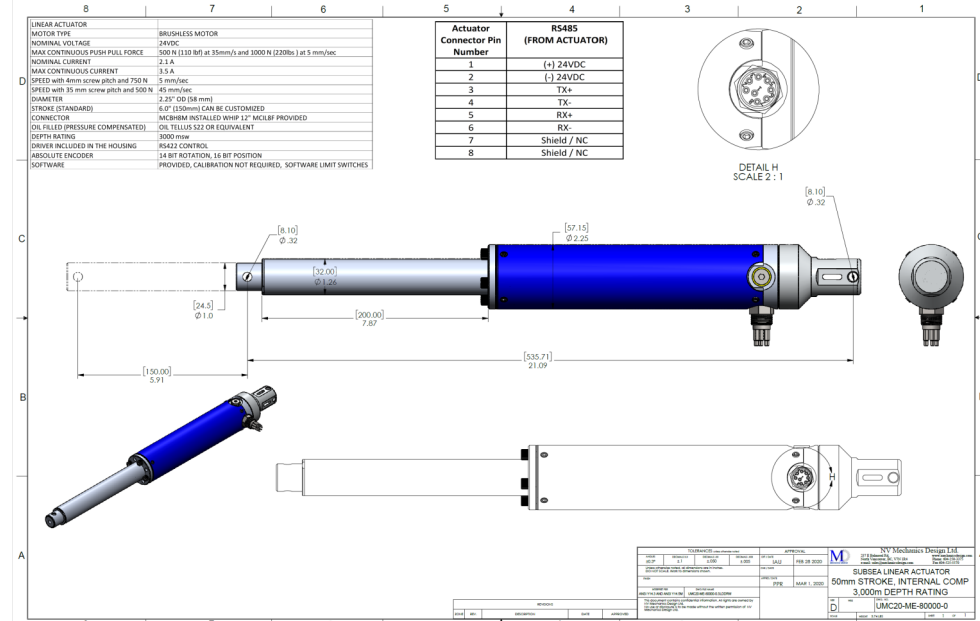
To order call: 1-604-250-3375 or visit www.mechanicsdesign.com



NV Mechanics Design Ltd
 #105-3728 North Fraser Way
 Burnaby, BC, Canada
 Tel: +01 604-250-3375
sales@mechanicsdesign.com
www.mechanicsdesign.com



MOTOR TYPE	BRUSHLESS MOTOR
NOMINAL VOLTAGE	24VDC
NOMINAL FORCE AT 5mm/s SPEED	220 LBS OR 1000N OTHER SPEED/FORCES AVAILABLE
INTERMITTENTLY PERMISSIBLE TORQUE	15 ft. lbf [20 Nm]
MAX CONTINUOUS CURRENT	2.2 A
DIAMETER	2.25in [57 mm]
LENGTH WITH INTERNAL OIL COMP	21 in [530mm]
UNDERWATER CONNECTOR WITH 12" WHIP	MCBH8M SUBCONN
PART NUMBER	UMC21-ME-80000-0 (INT OIL COMP AND DRIVER)



Subsea Linear Actuators

Pressure Compensated Brushless Motor/Gearbox Absolute Encoder, Driver Included in the Housing

The compact design is self oil compensated to depths up to 3,000 msw depth and suitable for a wide range of tasks—standard stroke 150 mm with 35 mm/sec at 500N

Power (24V DC, 3 A) and a PC with a COM port is all you need. The DC Brushless Actuator includes inside the housing all the necessary circuitry (logic and driver) for controlling the motor using standard RS422 serial communication (9600 baud, 8, N, 1). The multi-turn rotary encoder provides a 14 bits counter on single turn (16,383 counts per turn), and an additional 16 bits turns counter. Two virtual (software) switches are available for limiting the actuator travel distance between user configurable limits.

Control Software

Visual Basic .NET 2010 source code and GUI is provided. You can use the code or portions of it under no obligation. The GUI software is meant to provide an easy and fast way to test the actuator.

